



merseyflow

Quicker, easier, more reliable journeys

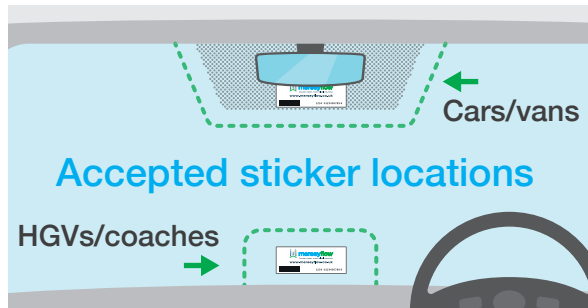
Please
turn
over

Displaying your merseyflow sticker in your vehicle

You should display your merseyflow sticker **inside your vehicle** by following the instructions below.

1. Check the best position for your sticker

Before you remove the protective cover from your sticker, check if there is room to place it horizontally in the specified location on the inside of your windscreen, as shown to the right, making sure it will not obstruct the driver's view.



If there is no room to put your sticker in the specified location, check the other side of this leaflet for alternative options.



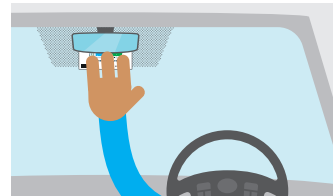
2. Clean your windscreen

Clean and dry the glass on the inside of your windscreen in the area where the sticker will be placed.



3. Check the sticker and remove the protective cover

Make sure the sticker is horizontal and the right way up and peel the protective cover away from it. The sticker is now ready to attach to the windscreen.



4. Attach the sticker

Fix the sticker, holding it against the windscreen for at least ten seconds. Remove any trapped air by rubbing the sticker after applying.

Well done – you're ready to go!

www.merseyflow.co.uk



merseyflow

Quicker, easier, more reliable journeys

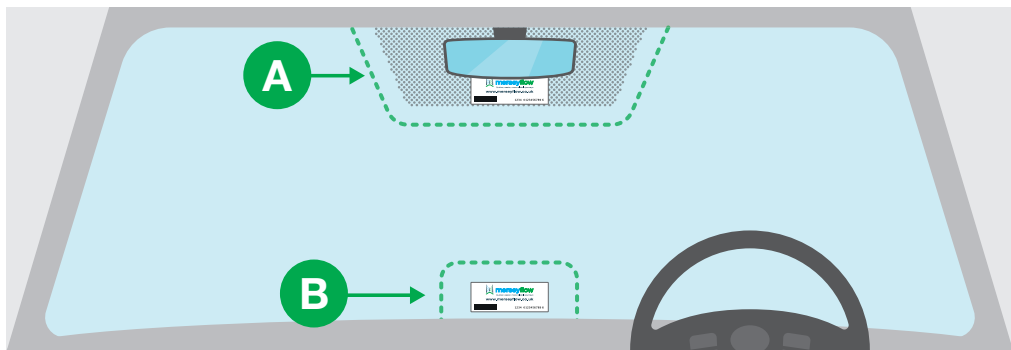
Please
turn
over

Displaying your merseyflow sticker in your vehicle

Fix your sticker **above or behind your rear-view mirror**. If you have a black dotted area behind your rear-view mirror, please place the sticker within it.

Some vehicles have casing and sensors built in around the rear view mirror. Please **do not** put your sticker on this casing – it must go on the actual windscreen.

If you drive a car or a van and there is no room to put your sticker above or behind the rear view mirror, then you can place it at the **bottom centre** of your windscreen as shown below.



 Accepted sticker locations  Cars and vans  HGVs/coaches

Car and van drivers: only put the sticker in position B if the mirror casing prevents you placing it in position A.
HGV/coach drivers: please use position B.



Once installed, the sticker must not be removed. The sticker cannot be transferred between vehicles – you will need a new sticker if you get a new vehicle. There will be a charge for your replacement sticker.

There is more guidance online at www.merseyflow.co.uk, including a video showing how to fix your sticker and details of all the tolling costs.

You can also email us at info@merseyflow.co.uk if you need more information.

Thanks for joining merseyflow

www.merseyflow.co.uk